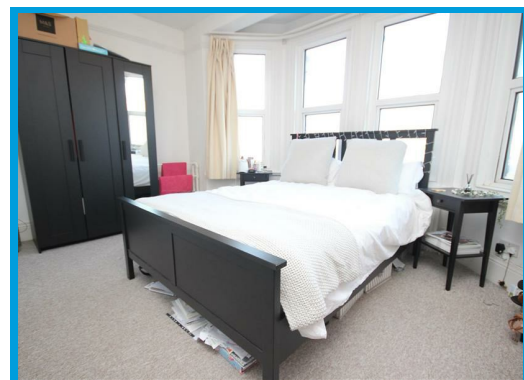
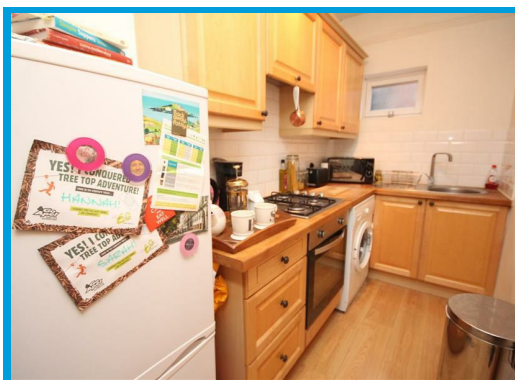




York Road, Guildford Surrey, GU1 4DF

£1,525 PCM

Beautifully presented and located in the heart of the town centre, This two double bedroom apartment has been recently refurbished and offers spacious accommodation throughout.



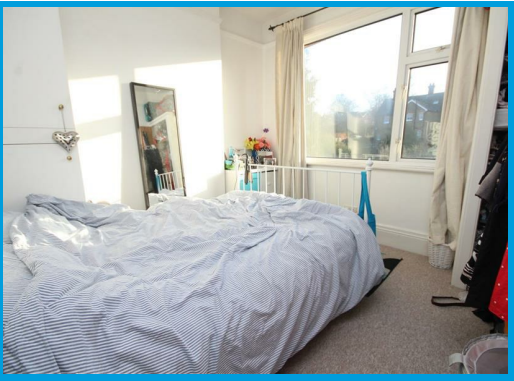
# Description

Beautifully presented and located in the heart of the town centre,

This two double bedroom apartment has been recently refurbished and offers spacious accommodation throughout.

Light & airy throughout, the property comprises an entrance hall, a large lounge, a modern kitchen with appliances, bathroom with shower and two double bedrooms.

The property is modern yet retains character features, use of off street parking and is moments walk from Guildford High Street.



Energy Efficiency Rating		
	Current	Potential
Very energy efficient - lower running costs		
(92 plus) A		
(81-91) B		
(69-80) C		
(55-68) D		
(39-54) E		
(21-38) F		
(1-20) G		
Not energy efficient - higher running costs		
England & Wales	63	65
EU Directive 2002/91/EC		

Environmental Impact (CO <sub>2</sub> ) Rating		
	Current	Potential
Very environmentally friendly - lower CO <sub>2</sub> emissions		
(92 plus) A		
(81-91) B		
(69-80) C		
(55-68) D		
(39-54) E		
(21-38) F		
(1-20) G		
Not environmentally friendly - higher CO <sub>2</sub> emissions		
England & Wales	58	59
EU Directive 2002/91/EC		

